

ATLAS II

capacity up to 4,600 lbs

The 3WG4 Series power winch from Thern packs power and performance into a compact and lightweight package for pulling or lifting. Featuring rugged construction and precision machining, this winch delivers the pulling and lifting strength you need on the work site.

Fully-enclosed precision worm gearing ensures smooth, dependable, long-lasting operation, while sturdy lifting handles allow for easy transport.



MACHINE CUT GEARS provide high efficiency and smooth operation.

ENCLOSED OIL BATH reduced wear on gears for long operating life. Oil seals keep oil in and dirt out.

CAST ALUMINUM combines rugged work site durability with a lightweight package.

INTERNAL MECHANICAL OR MOTOR BRAKE (A) provides positive load control for lifting and lowering operations.

BALL BEARINGS provide smooth and efficient operation.

LIFTING HANDLES (B) aid in work site lifting and positioning.

DUAL FUNCTION CABLE ANCHOR (C) has both standard set screw slot and keyhole slot on drum for quick disconnect with 3/8 inch swaged ball ends.

MOUNTING OPTIONS include floor, wall and ceiling configurations.

MODULAR DESIGN for easy product customization and quick lead times.

2 YEAR MOVE IT WITH CONFIDENCE LIMITED WARRANTY leads the industry.



Mechanical brake for lifting applications.



Lifting handles provide easy attachment points for lifting straps.



Drum features a set screw slot (left) and keyhole slot (right).



ATLAS II

capacity up to 4,600 lbs

OPTIONS AND ACCESSORIES

EMERGENCY HAND CRANK for manual operation in power loss situations.

ROTARY LIMIT SWITCHES provide secondary shut-off for load travel in one or two directions.

INTERNAL MECHANICAL BRAKE available for motor brake models to provide dual braking.

SPECIAL FINISHES for harsh or hazardous environments.

SPECIAL MOTORS AND CONTROLS (D) are available in a wide range of standard and custom configurations for single or variable speed.

TORQUE LIMITERS as part of the motor controls.



Custom controls available for special applications.

3WG4 Series Performance Characteristics

| Model | Brake Style | Duty Rating | Motor Codes | Motor HP | Load Rating | | | | | | Line Speed | | | |
|-----------------|-------------|-------------|-------------|----------|-------------|--------|----------|--------|-----------|--------|------------|-------|-----------|-------|
| | | | | | 1st Layer | | Mid Drum | | Full Drum | | 1st Layer | | Full Drum | |
| | | (mins) | | | (lb) | (kg) | (lb) | (kg) | (lb) | (kg) | (fpm) | (mpm) | (fpm) | (mpm) |
| 3WG4-B3500-9S6 | Internal | 15 | B,C,D,E | 1.5 | 3500 | 1587.6 | 2500 | 1134.0 | 1900 | 861.8 | 9 | 2.7 | 16 | 4.9 |
| 3WG4-B3500-13S6 | Internal | 15 | B,C,D,E | 2 | 3500 | 1587.6 | 2500 | 1134.0 | 1900 | 861.8 | 13 | 4.0 | 24 | 7.3 |
| 3WG4-B4600-9S6 | Internal | 15 | B,C,D,E | 2 | 4600 | 2086.5 | 3300 | 1496.9 | 2500 | 1134.0 | 9 | 2.7 | 16 | 4.9 |
| 3WG4-B4600-13S6 | Internal | 15 | C,D,E | 3 | 4600 | 2086.5 | 3300 | 1496.9 | 2500 | 1134.0 | 13 | 4.0 | 24 | 7.3 |
| 3WG4-M3500-9S6 | Motor | 60 | D,E | 1.5 | 3500 | 1587.6 | 2500 | 1134.0 | 1900 | 861.8 | 9 | 2.7 | 16 | 4.9 |
| 3WG4-M3500-13S6 | Motor | 60 | B,D,E | 2 | 3500 | 1587.6 | 2500 | 1134.0 | 1900 | 861.8 | 13 | 4.0 | 24 | 7.3 |
| 3WG4-M4600-9S6 | Motor | 60 | B,D,E | 2 | 4600 | 2086.5 | 3300 | 1496.9 | 2500 | 1134.0 | 9 | 2.7 | 16 | 4.9 |
| 3WG4-M4600-13S6 | Motor | 60 | D,E | 3 | 4600 | 2086.5 | 3300 | 1496.9 | 2500 | 1134.0 | 13 | 4.0 | 24 | 7.3 |

3WG4 Series Drum Capacities

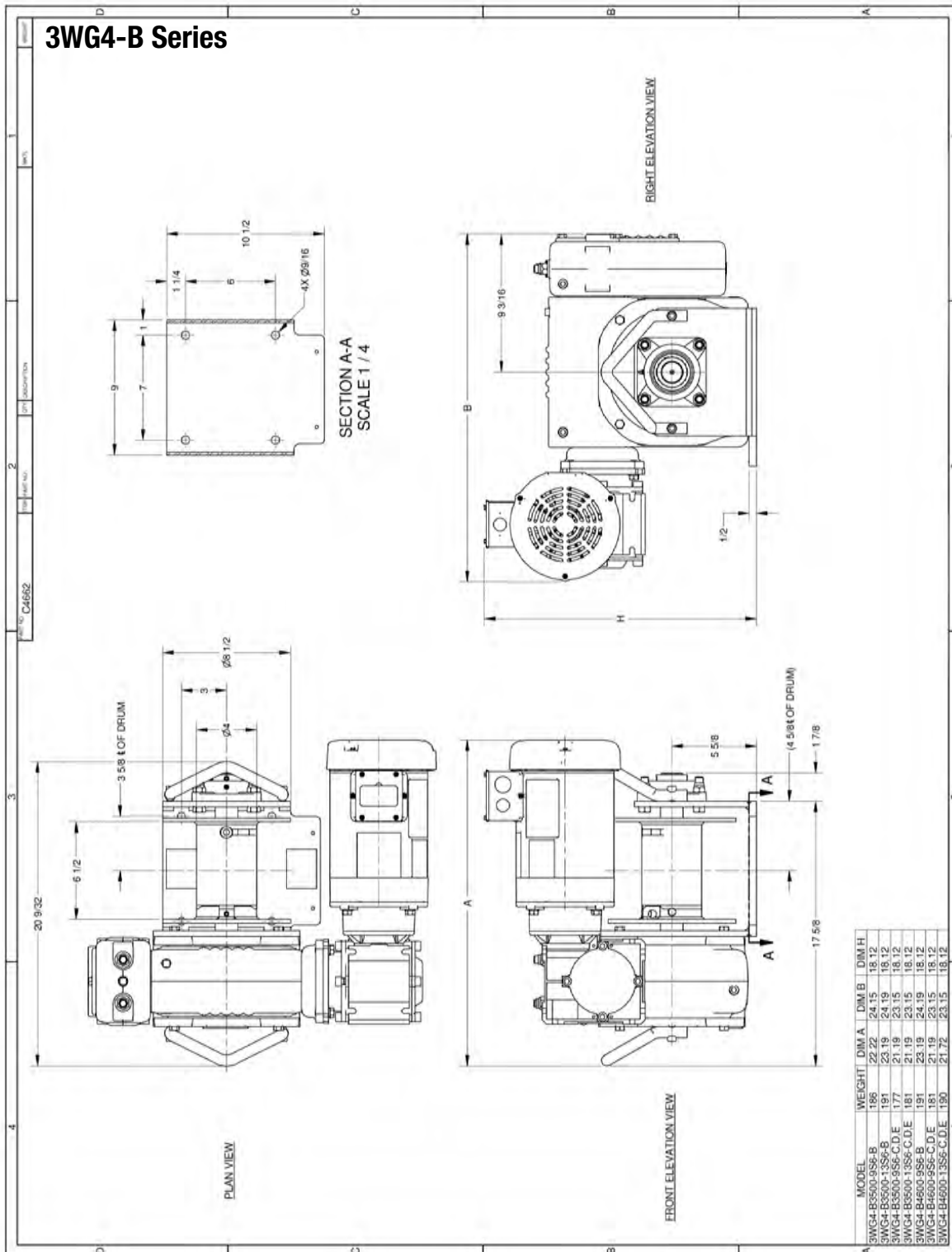
| Model | Wire Rope Diameter | | Breaking Strength | | Drum Layer | | | | | |
|----------|--------------------|------|-------------------|---------|------------|-----|----------|------|-----------|------|
| | (in) | (mm) | (lb) | (kg) | 1st Layer | | Mid Drum | | Full Drum | |
| | | | | | (ft) | (m) | (ft) | (m) | (ft) | (m) |
| 3WG4-B/M | 3/8 | 9.5 | 15,000 | 6,804.0 | 14 | 4.3 | 65 | 19.8 | 140 | 42.7 |

| Motor Codes | | |
|-------------|--|---------|
| B | 230 volt | 1 phase |
| C | 208 volt | 3 phase |
| D | 230 volt | 3 phase |
| E | 460 volt | 3 phase |
| F | All other voltages please contact the factory. | |
| PN | Pneumatic - contact the factory | |
| HY | Hydraulic - contact the factory | |



ATLAS II

capacity up to 4,600 lbs

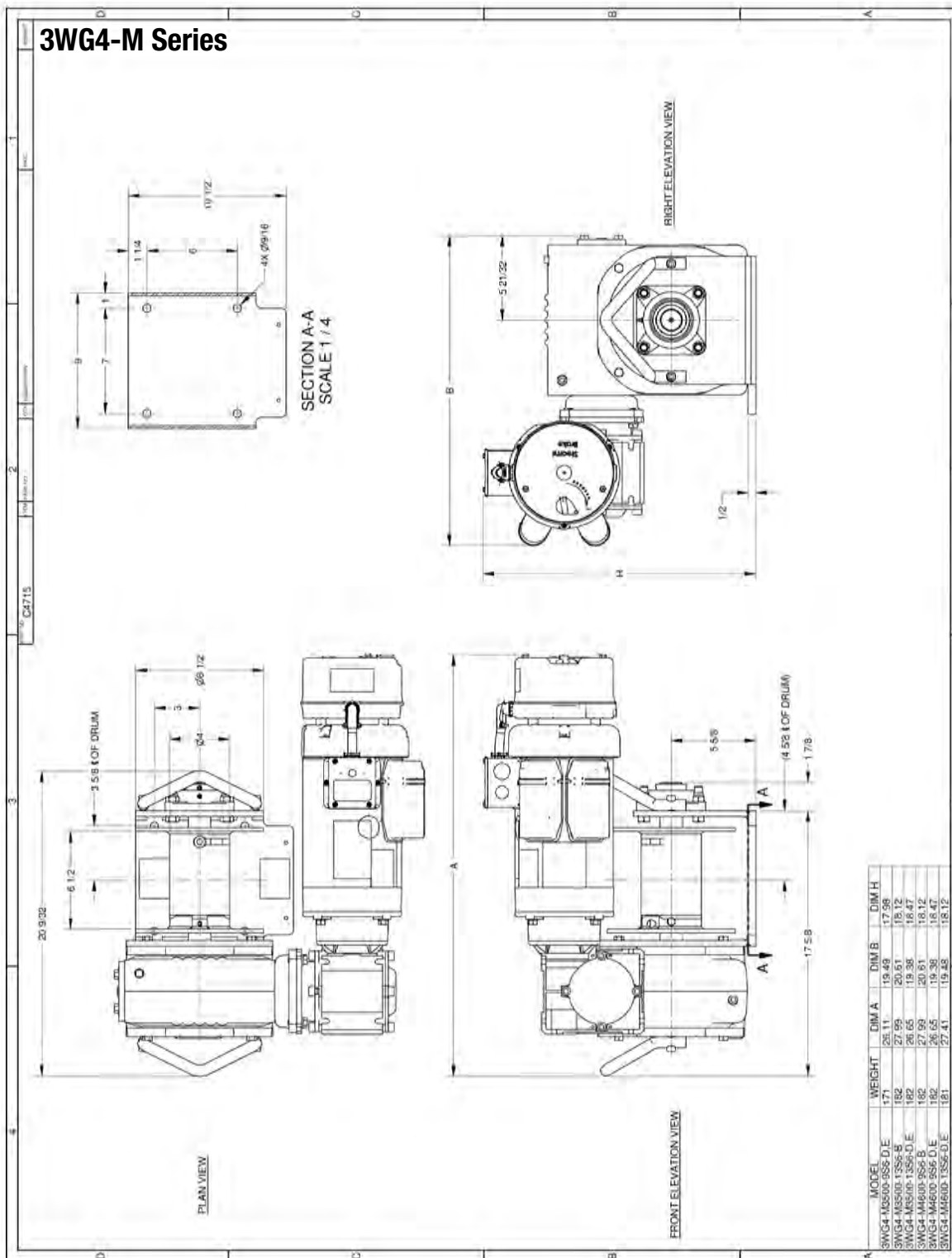


IMPORTANT:
It is the owner or operator's responsibility to determine the suitability of the equipment to its intended use. Study all applicable codes, manuals and regulations. Be sure to read the Owner's Manual supplied with the equipment before operating it.



ATLAS II

capacity up to 4,600 lbs



IMPORTANT:
It is the owner or operator's responsibility to determine the suitability of the equipment to its intended use. Study all applicable codes, manuals and regulations. Be sure to read the Owner's Manual supplied with the equipment before operating it.

